



PORTAFILL TRACKED CONVEYORS TECHNICAL SPECIFICATION

TC50 (50ft / 15m conveyor)

CONVEYOR

- 900mm wide belt
- Feed boot impact bed
- Disc return rollers
- Slatted tail drum
- Ram covers
- Hydraulic oil cooler

POWER

- CAT 2.2 (EU Stage IIIA, Tier 4 Interim Compliant) Diesel Engine
- 100 L Capacity (Approx.) Diesel Tank
- 380 L Capacity (Approx.) Hydraulic Tank
- Additional bulkhead to power extra conveyor (only if single drive)

TRACKS

- Track shoe – 400mm
- Dog lead remote control

OPTIONS

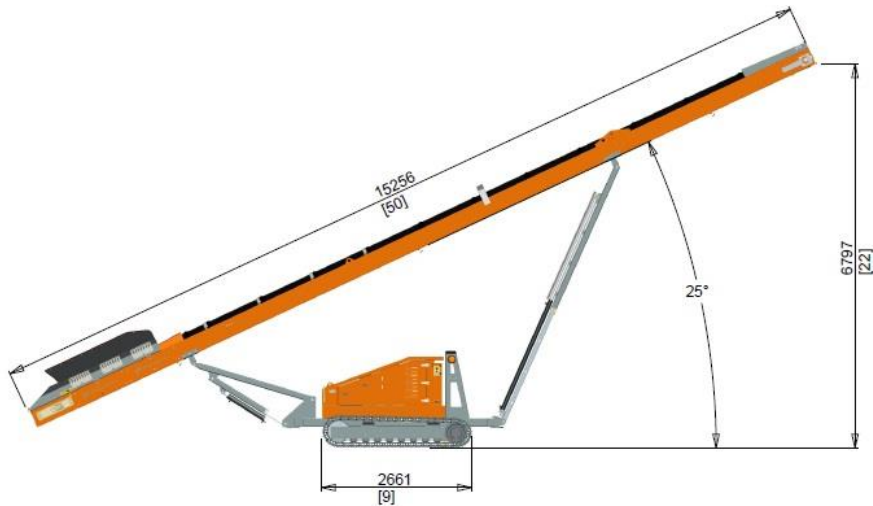
- Deutz D2011 L04i (EU Stage IIIA, Tier 4 Interim Compliant) Diesel Engine
- Radio remote control for tracks
- Dual drive on main conveyor drive drum
- Chevron belt
- Electric hydraulic drive
- Full conveyor skirting
- Conveyor underside guarding

WEIGHT

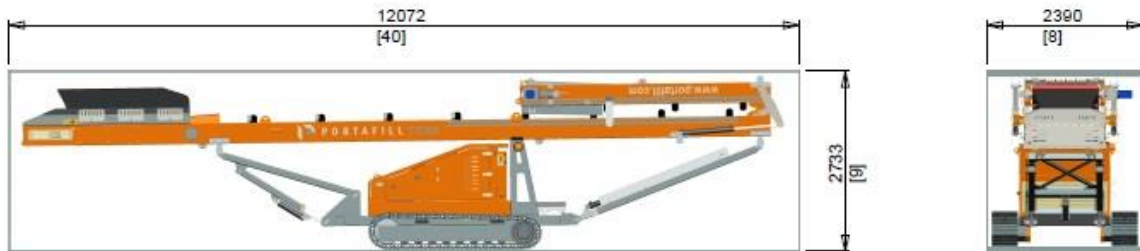
- 8,550KGS

**All drawing dimensions approximate and in millimetres. Portafill International reserves the right to alter the specification of these machine without notice.*

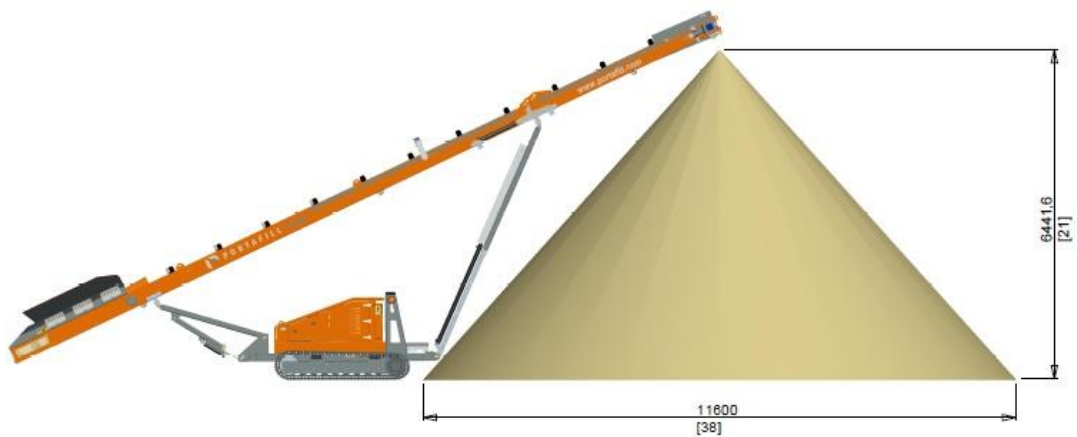
Working Dimensions TC50



Transport Dimensions TC50



Stockpile Capacity TC50



STOCKPILE VOLUME = 227m³

**All drawing dimensions approximate and in millimetres. Portafill International reserves the right to alter the specification of these machine without notice.*



Powerunit Options

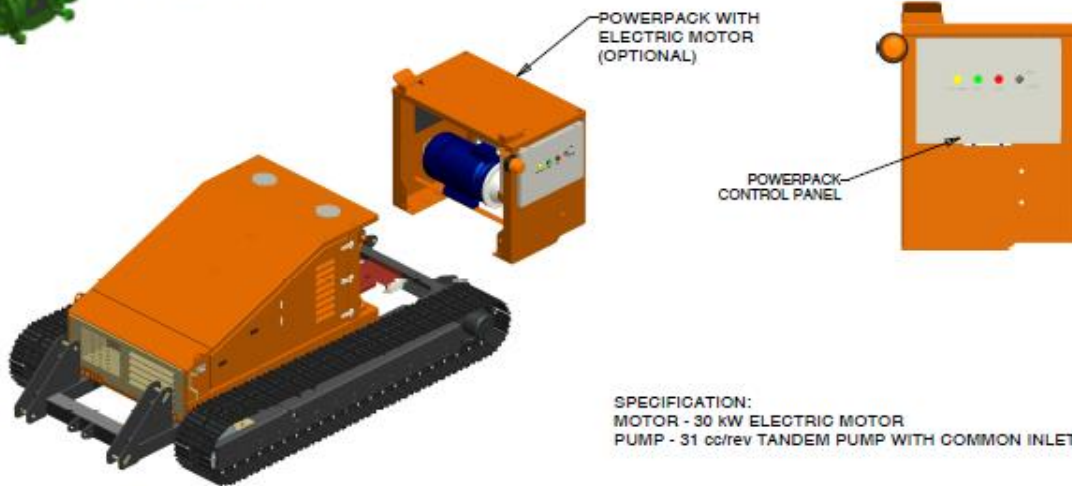
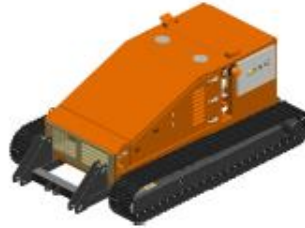
POWERUNIT ENGINE OPTIONS



CATERPILLAR C2.2 37.0 kW/49.6 bhp



DEUTZ D2011 L041 (TIER III COMPLIANT)
DIESEL 41 kW (55HP)



**All drawing dimensions approximate and in millimetres. Portafill International reserves the right to alter the specification of these machine without notice.*