



PORTAFILL TRACKED CONVEYORS TECHNICAL SPECIFICATION

TC80 (75ft / 22m conveyor)

CONVEYOR

- 900mm wide belt
- Feed boot impact bed
- Disc return rollers
- Slatted tail drum
- Ram covers
- Hydraulic oil cooler
- Trestle extensions for easy setup at high working angles
- Snug drum
- Dual drive on main drive drum

POWER

- CAT 2.2 (EU Stage IIIA, Tier 4 Interim Compliant) Diesel Engine
- 100 L Capacity (Approx.) Diesel Tank
- 380 L Capacity (Approx.) Hydraulic Tank

TRACKS

- Track shoe – 400mm
- Dog lead remote control

OPTIONS

- Deutz D2011 L04i (EU Stage IIIA, Tier 4 Interim Compliant) Diesel Engine
- Radio remote control for tracks
- 1000mm wide belt
- Chevron belt
- Electric hydraulic drive
- Full conveyor skirting
- Conveyor underside guarding

WEIGHT

- 12,040KGS for 900mm wide belt
- 12,210KGS for 1000mm wide belt

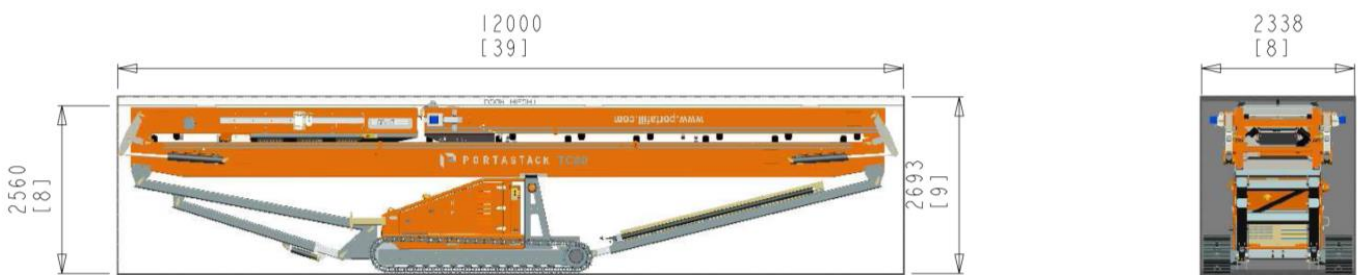
**All drawing dimensions approximate and in millimetres. Portafill International reserves the right to alter the specification of these machine without notice.*



Working Dimensions TC80



Transport Dimensions TC80



**All drawing dimensions approximate and in millimetres. Portafill International reserves the right to alter the specification of these machine without notice.*



Powerunit Options

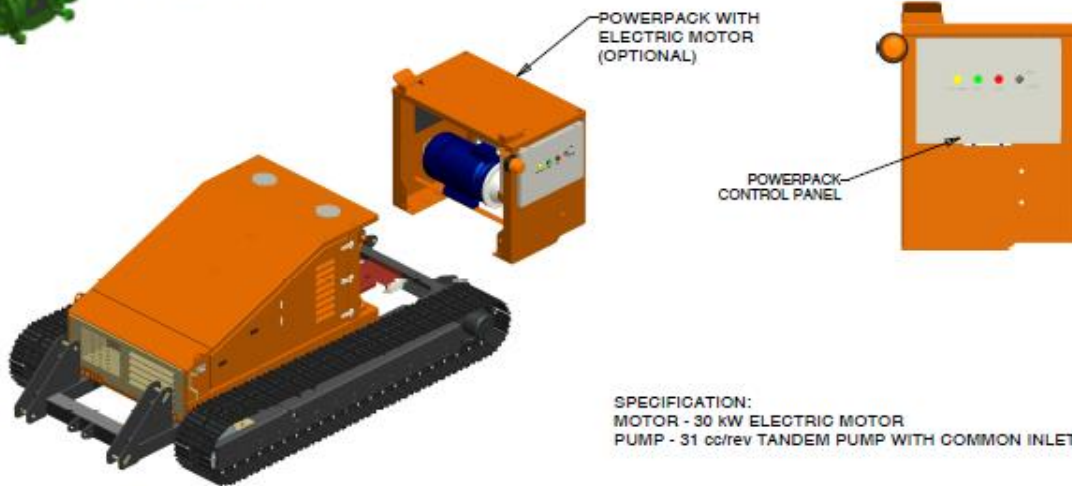
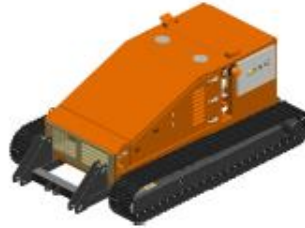
POWERUNIT ENGINE OPTIONS



CATERPILLAR C2.2 37.0 kW/49.8 bhp



DEUTZ D2011 L041 (TIER III COMPLIANT)
DIESEL 41 kW (55HP)

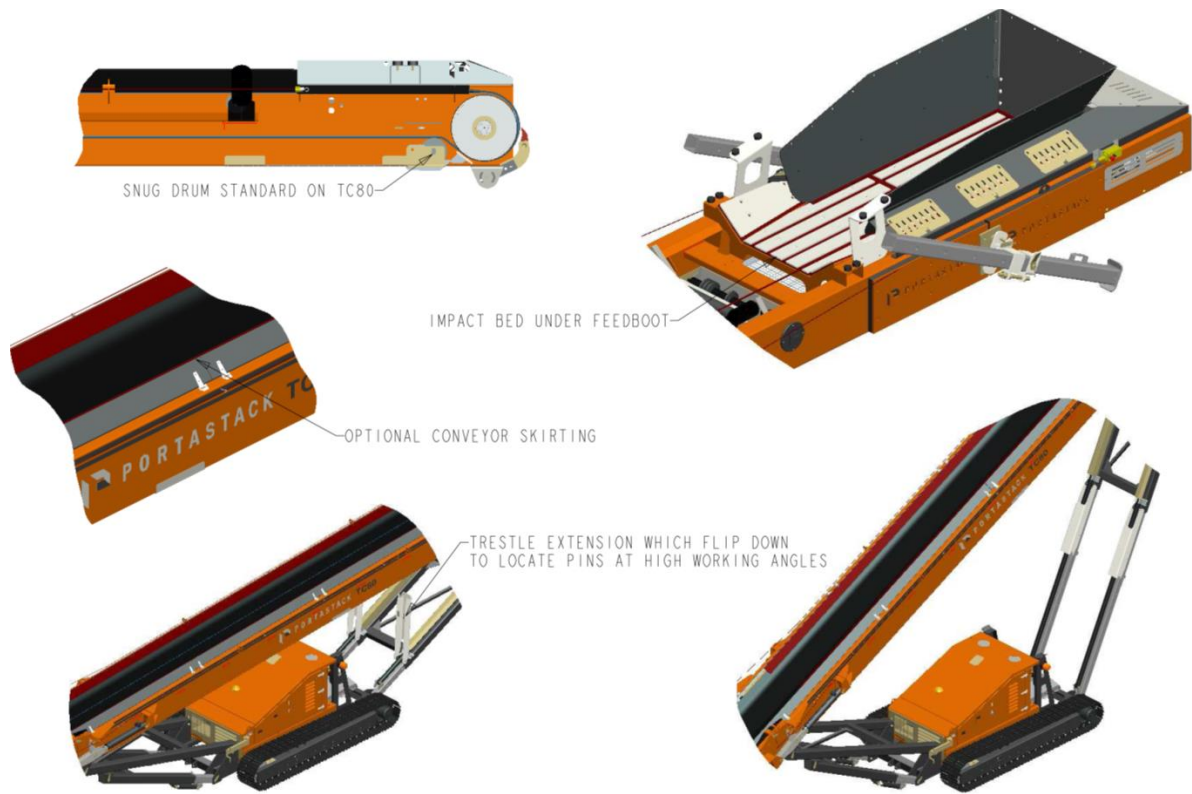


SPECIFICATION:
MOTOR - 30 kW ELECTRIC MOTOR
PUMP - 31 cc/rev TANDEM PUMP WITH COMMON INLET

**All drawing dimensions approximate and in millimetres. Portafill International reserves the right to alter the specification of these machine without notice.*



Additional Specification and Options



**All drawing dimensions approximate and in millimetres. Portafill International reserves the right to alter the specification of these machine without notice.*